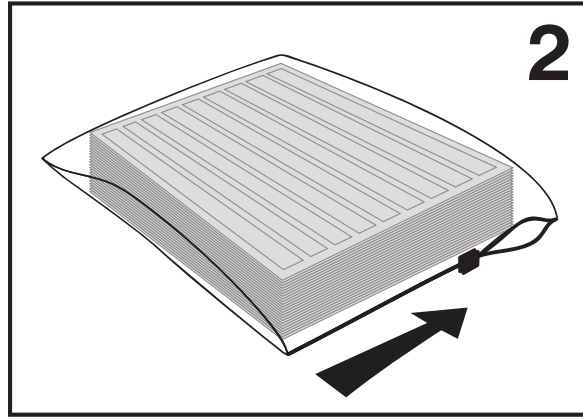
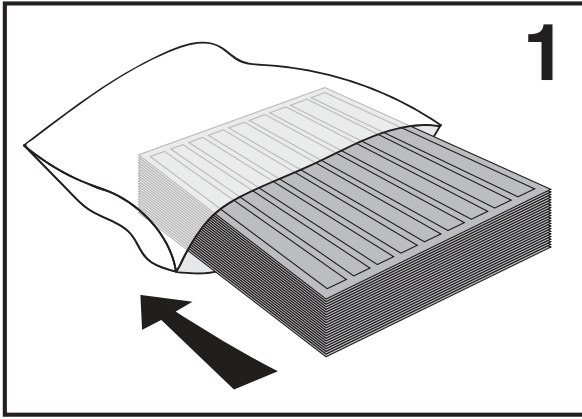
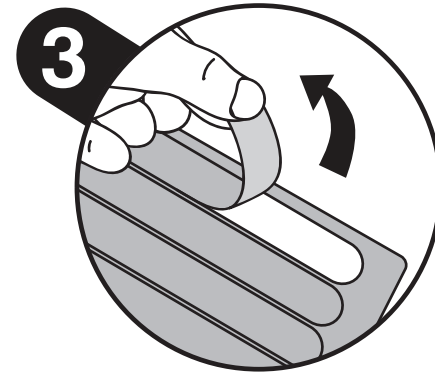
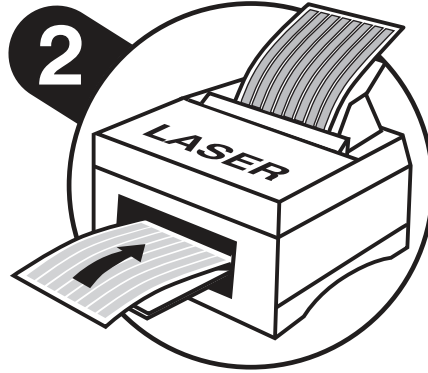
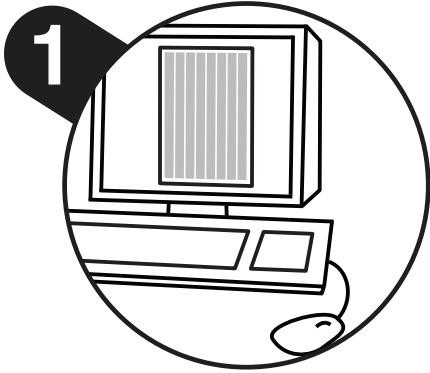


# Storage Instructions

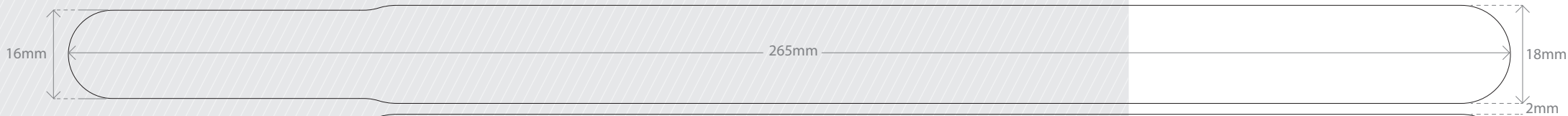


We have enclosed a plastic bag for your convenience to store your wristbands in. This is to keep them in the best condition for laser printing.

# Usage Instructions



# 10 up Wristbands - Laser Print Template



Sheet size: A4 (21mm x 297mm)  
Wristbands per sheet: 10  
Wristband size: 265mm x 18mm  
Gap between wristbands: 2mm  
Long edge print margin: 5mm  
Short edge print margin: 16mm

 Recommended print area